

i-CEILING®



Achieve interaction of materials, Life and environment by innovation.

**PIVOT** JiangSu PIVOT New Decorative Materials Co.,LTD.

Add: Pivot Industrial Park, Huashi, Jiangyin, Jiangsu, China Post: 214421

Tel: +86-510-86218220 Fax: +86-510-86218185 URL: [www.pivotacp.com](http://www.pivotacp.com)

E-mail: [sales@pivotacp.com](mailto:sales@pivotacp.com)



RoHS



# Product Manual

FILM LAMINATED  
METAL PANEL



**PIVOT**

**PIVOT**

<http://www.pivotacp.com>



# CONTENT

1、Story of Pivot	01
2、I-Ceiling® Product Series	02
Product for Interior	
( 1 ) I-Ceiling® CF4070 ( See-through ceiling system )	04
( 2 ) I-Ceiling® CU30100 ( See-through suspended ceiling system )	08
( 3 ) I-Ceiling® CT5040(concave-convex type ceiling system)	12
( 4 ) I-Ceiling® WF5035(See-through clip-in wall system)	16
( 5 ) I-Ceiling® WT5040 ( concave-convex type wall system )	20
Product for Exterior	
( 1 ) I-Ceiling® SunT5040 ( Sun concave-convex type wall system )	24
( 2 ) I-Ceiling®SunU5040 ( Sun See-through wall system )	28
3、I-Ceiling® Properties and Test Reports	32
4、I-Ceiling® Maintenance	34
5、Material Realization	35
6、I-Ceiling® Advantage & Popular Colors	46
7、Innovation lead to a new future	48

# PIVOT STORY

## PIVOT

Established in 2005, Jiangsu Pivot New Decorative Materials Co.,Ltd is located in The So-called " World Number One" Huaxi Village and covers an area of more than 67 Thousand square meters. And Pivot is one of the main international suppliers of high-quality aluminum decorative materials. Pivot Owns several brands like"Huaxi Village", "I·BOND", "I-Ceiling", "Decobond" and "Easyfix" and specializes in R&D, production and sale of high-quality new green building & decoration materials and advertising materials. As a comprehensive solution supplier for new materials and installation system in building, decoration, signs and advertising industries, PIVOT takes innovation as the core of its brands and culture, PIVOT NEW MATERIAL listed successfully on 8th August,2014.The stock code is 830911.

## Road of PIVOT

### Enterprise Culture

Pivot, the leader of the decorative materials manufacturing and channel marketing developing in China, will become the first overall-solution supplier of new decorative materials and installation system for the architecture, decoration, signage and advertisement industry. Pivot is dedicated to becoming the important partner of our customers to make our customers' life more colorful and make our customer business more successful through product innovation and channel service.

### Mission

Enterprise: Achieve harmonious interaction of materials, Life and environment through innovation.

Customers: Satisfy the needs of customers and create value for them.

Partners: Grow together with all partners and share the value of growth.

### Value of Innovation Inspire the Future

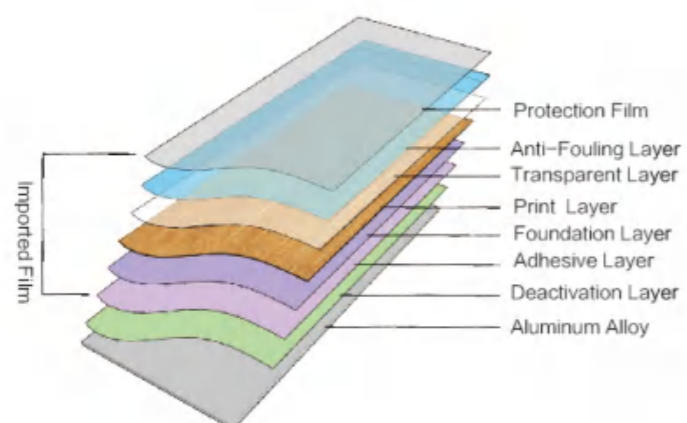
- 1、Innovation Inspire the Future
- 2、Customers first, focus on the satisfaction of them.Teamwork, sharing benefits and responsibilities.
- 3、Honesty and integrity.
- 4、Innovation is a spirit relating to everything and everyone.
- 5、Continuous improvement,sustainable innovation and pursuit of excellence.
- 6、Love life, brave in bearing social responsibilities.



# i-CEILING®

## FILM LAMINATED METAL PANEL

Film Laminated Metal Panel (I-Ceiling® Patent Code : ZL 2010 20220203.9) is an new environment-friendly film — laminated product with metal panel as the base material and laminated with various film pattern on the surface. The traditional interior materials do not have rich color options and the color hue is very cold. But i-ceiling® resolve this problem very well with novel design, bountiful pattern option, reasonable structure design, all which serve as unique advantages to replace other wood surface material.



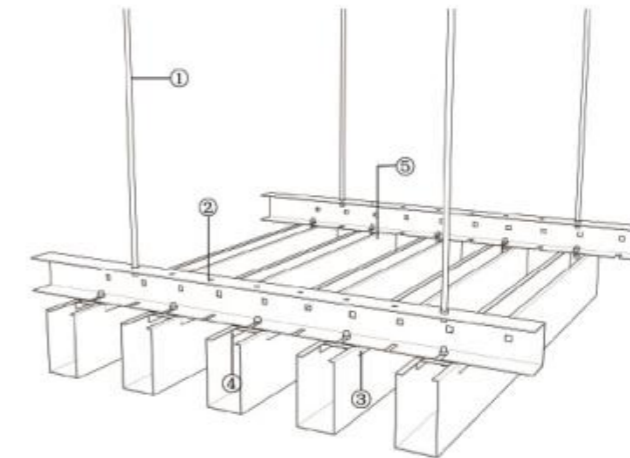
# I-Ceiling® CF4070 ( See-through ceiling system )

## Product for Interior

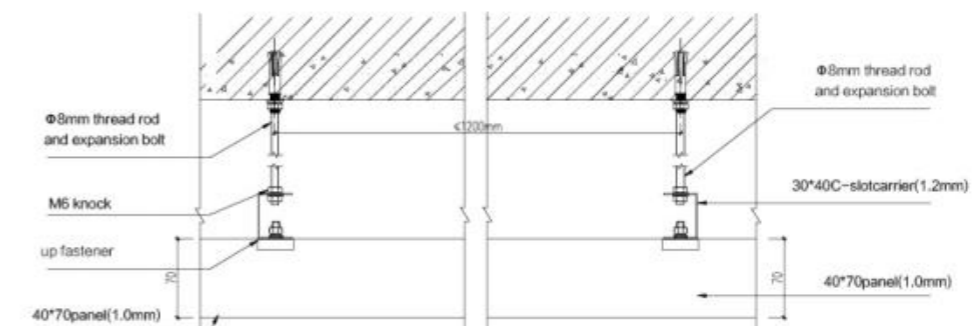
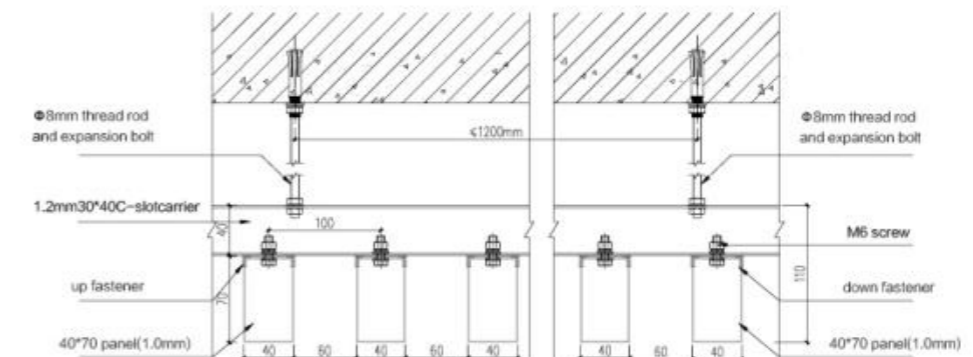


I-Ceiling® CF4070 belongs to See-through ceiling system, featuring in high directionality, could make a clear and open visual effect, novel & unique, film coated surface of rich texture and strong 3D-effect, various color choices, and equipped with wind-proof structure, suitable for a variety of areas.




## ○ I-Ceiling® CF4070 ( See-through ceiling system ) model diagram and detailed decomposition map



- ① Φ8mm thread rod
- ② 30\*40 C-slot carrier (1.2mm)
- ③ up fastener
- ④ down fastener
- ⑤ 40\*70 panel (1.0mm)



System component

I-Ceiling® CF4070 See-through ceiling system	main material				carrier				fastener			
	shape	materials	specification (W*H*L)mm	thick- ness (mm)	shape	materials	specification (mm)	thickness (mm)	up		down	
									specifica- tion (mm)	thickness (mm)	specifica- tion (mm)	thickness (mm)
	square tube profile	AA grade aluminum alloy	40*70* (1000-6000)	1.0	C-slot	galvanized steel	30*40	1.2	42*50	1.2	38*50	1.2
structure Diagram												

Description



Texture and color: Please refer to Pivot color chart



Distance modulus: 100mm or adjust as needed



Main carrier interval≤1200mm



Thread rod interval ≤1200mm



Perforation: no



Processing: hot extrusion



Surface treatment: hot-pressing lamination



Special size requirement could be customized

Application and Advantages



I-Ceiling® CF4070  
( See-through ceiling system ) Advantage

- Aluminum alloy extrusion
- See-through effect
- Wood veneer consistency
- Easy to install
- Good straightness
- Perfect edgefold

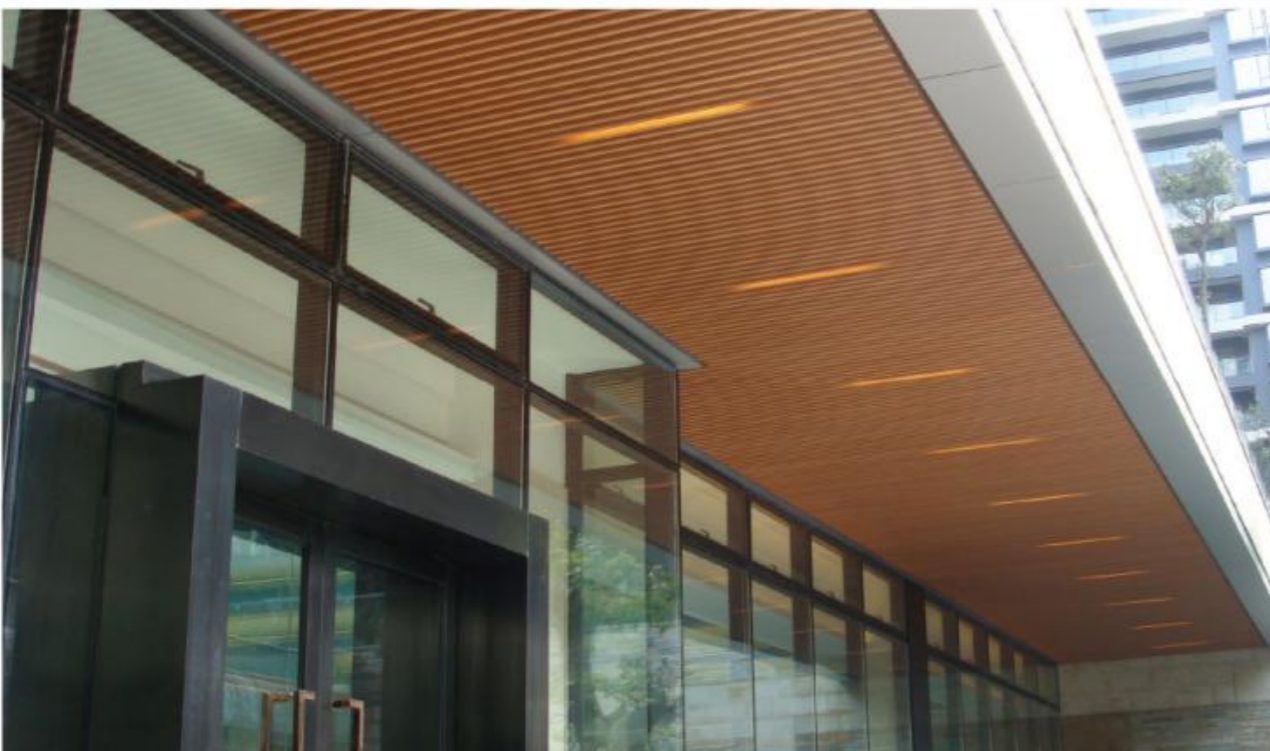
# I-Ceiling® CU30100

( See-through suspended ceiling system )

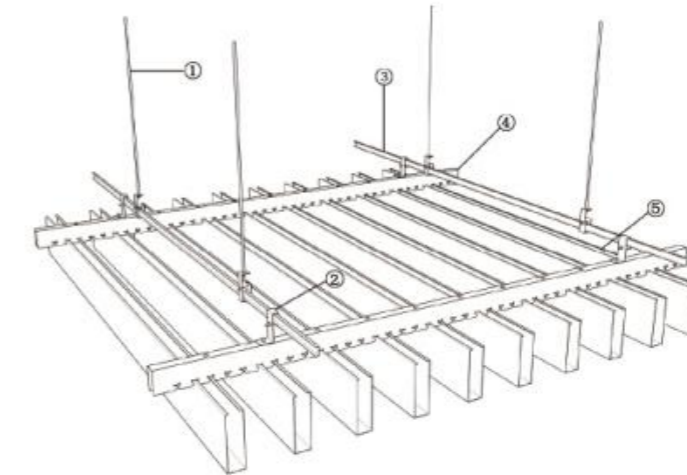
Product for Interior



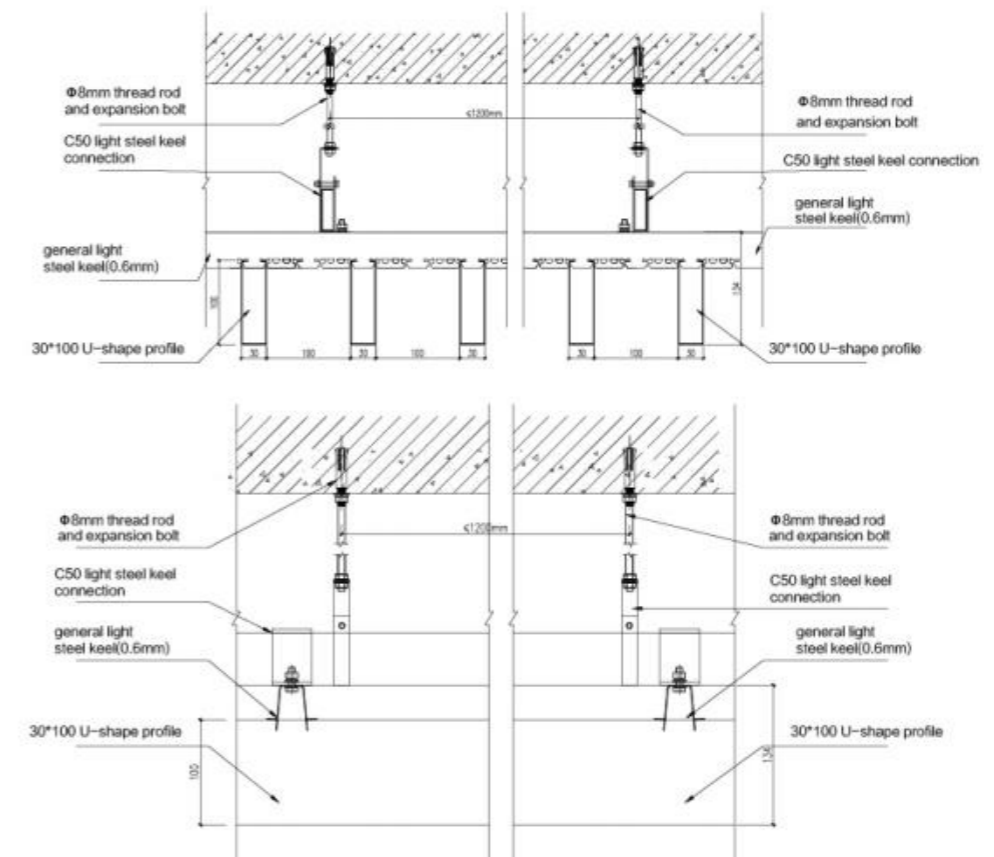
CU30100 belongs to See-through suspended ceiling system, featuring in high directionality, could make a clear and open visual effect, U-shape surface can be perforated with acoustic material backing, have good sound-absorbing function. Film coated surface of rich texture and strong 3D-effect, various color choices, specially designed carrier with wind-proof structure, easy to install, suitable for a variety of areas.






## ○ I-Ceiling® CU30100 ( See-through suspended ceiling system ) model diagram and detailed decomposition map



- ① Φ8mm thread rod
- ② C50 light steel keel connection
- ③ C50 light steel keel
- ④ general light steel keel ( 0.6mm )
- ⑤ 30\*100U-shape panel



System component

I-Ceiling® CU30100	main material				carrier				connection	
	shape	materials	specification (W*H*L)mm	thickness (mm)	shape	materials	specification (mm)	thickness (mm)	specification (mm)	thickness (mm)
	U-shape profile	AA grade aluminum alloy	30*100* (1000-6000)	0.8	general latch down keel	galvanized steel	23*43	0.6	40*50	0.8
structure Diagram										

Description



Texture and color: Please refer to Pivot color chart



distance modulus: 130mm or adjust as needed



main carrier interval≤1200mm



thread rod interval≤1200mm



perforation: various perforation pattern available, Sound-absorbingpaper backing, NRC=0.7



processing: 1.compressionmoulding 2. Roll-forming

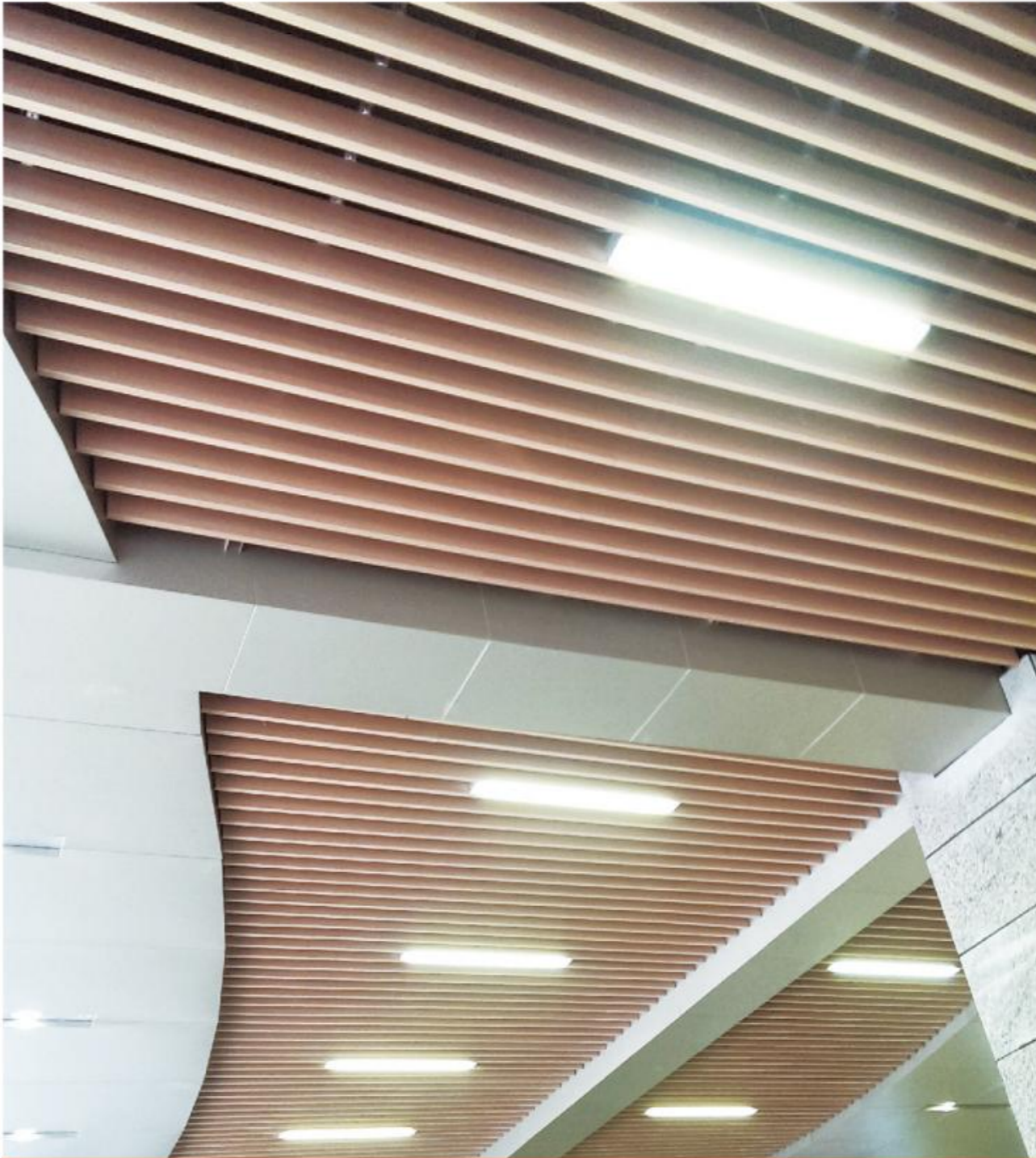


surface treatment:hot-pressing lamination ( film thickness ≈0.2mm )



special size requirement could be customized

Application and Advantages



I-Ceiling® CU30100  
( See-through suspended ceiling system ) Advantage

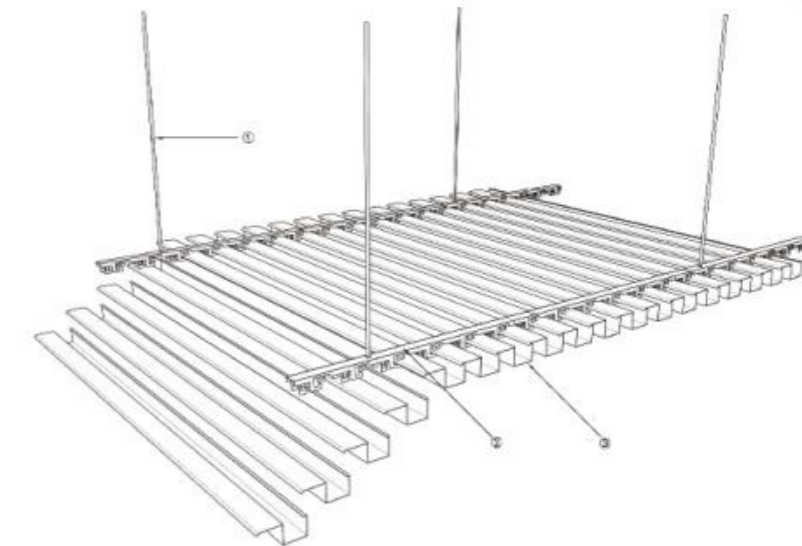
- wood veneerconsistency
- dedicated steel carrier
- easy to install
- variety choice of distance modulus

# I-Ceiling® CT5040 (concave-convex type ceiling system) Product for Interior

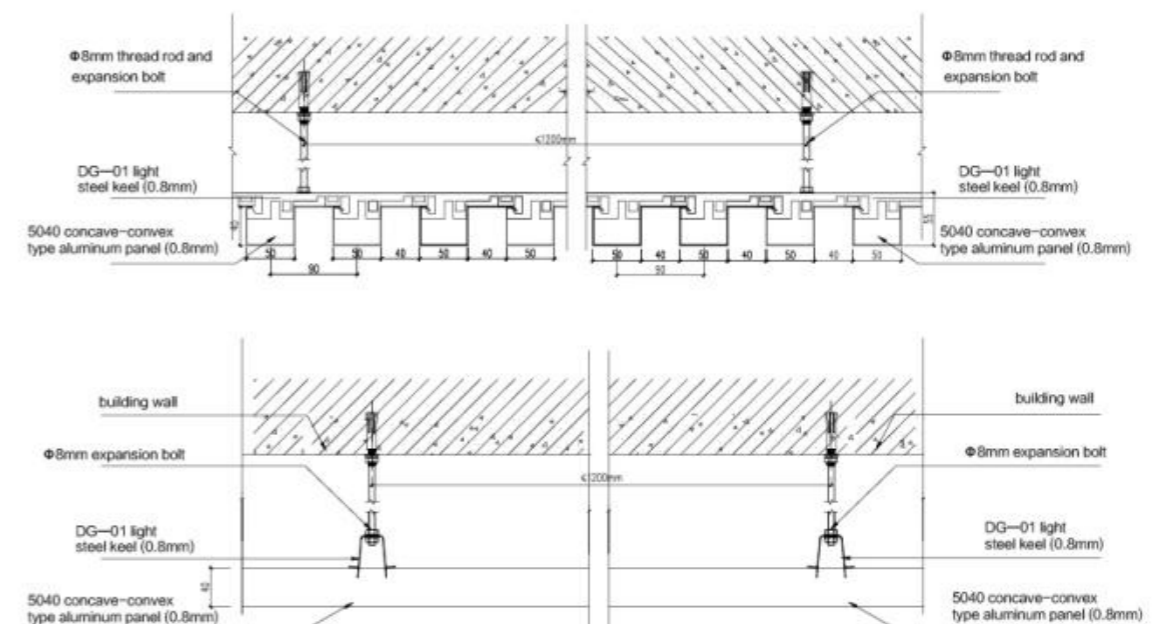


CT5040 belongs to See-through ceiling system,featuring in high directionality, could make a clear and open visual effect, film coated surface of rich texture and strong 3D-effect,various color choices, wind-proof structure carrier, easy to install, suitable for a variety of areas.The surface can be perforated with acoustic material backing, have good sound-absorbing function.



## ◎ I-Ceiling® CT5040 (concave-convex type ceiling system) model diagram and detailed decomposition map



- ① Φ8mm thread rod
- ② DG-01 light steel keel (0.8mm)
- ③ 5040 concave-convex type aluminum panel (0.8mm)



System component

I-Ceiling® CT5040	main material				carrier			
	shape	materials	specification (W*H*L)mm	thickness (mm)	shape	materials	specification (mm)	thickness (mm)
	concave-convex type strip	AA grade aluminum alloy	( 50+40 ) *40* (1000-6000)	0.8	DG01 type special steel keel	galvanized steel	28*28	0.8
Structure Diagram								

Description



Texture and color: please refer to Pivot color chart



Distance modulus: 90mm or adjust as needed



Main carrier interval ≤1200mm



Thread rod interval ≤1200mm



Perforation: various perforation pattern available, Sound-absorbing paper backing, NRC=0.7



Processing: 1. compression moulding 2. Roll-forming



Surface treatment: hot-pressing lamination ( film thickness ≈0.2mm )



Special size requirement could be customized

Application and Advantages



I-Ceiling® CT5040  
( concave-convex type ceiling system ) Advantage

- Dedicated steel carrier
- Easy to install
- Variety choice of distance modulus
- wood veneer consistency
- Wood veneer looks natural and clear

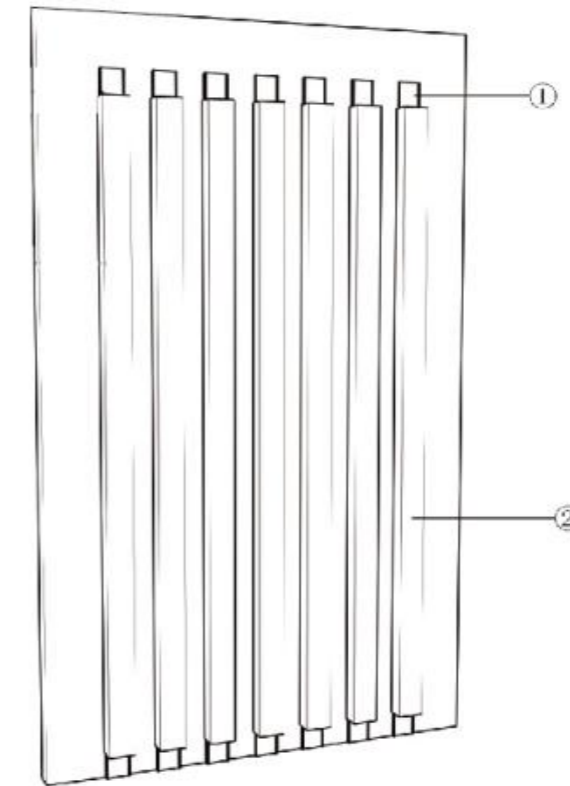
## I-Ceiling® WF5035 ( See-through clip-in wall system )

Product for Interior

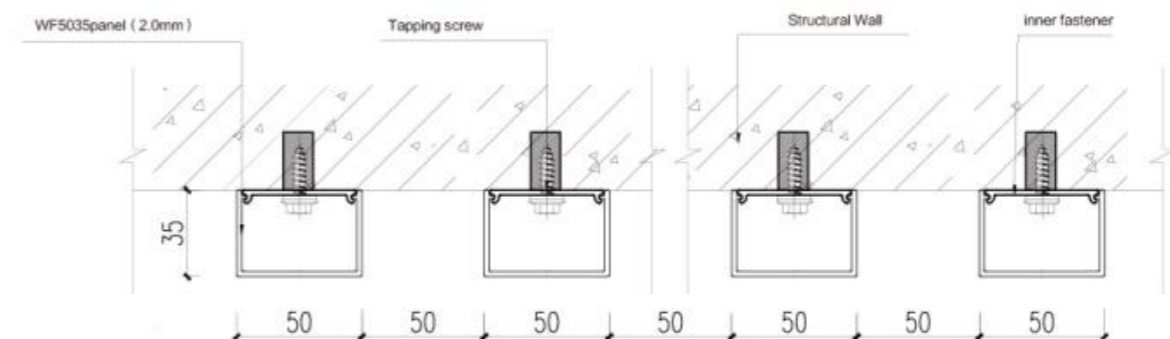


I-Ceiling® WF5035 belongs to See-through clip-in indoor wall system, and it can be installed both vertically and horizontally with Beautiful lines and could create a kind of warm atmosphere when wood-texture film laminated on the surface. This product is suitable for the application of public areas.



### ○ I-Ceiling® WF5035 ( See-through clip-in wall system ) model diagram and detailed decomposition map



① Inner fastener  
② WF5035 Panel ( 2.0mm )



System component

I-Ceiling® WF5035	main material				Carrier			
	Shape	Materials	Specification (W*H*L)mm	Thickness (mm)	Shape	Materials	Specification (mm)	Thickness (mm)
	square tube profile	AA grade aluminum alloy	50*35* (1000-6000)	2.0	Clip profile	AA grade aluminum alloy	45*5	2.0
Structure Diagram								

Description



Texture and color: Please refer to Pivot color chart



Distance modulus: 100mm or adjust as needed



Perforation: no



Processing: hot extrusion



Surface treatment: hot-pressing lamination ( film thickness ≈ 0.2mm )



Special size requirement could be customized

Application and Advantages



I-Ceiling® WF5035  
( See-through clip-in wall system )  
Advantage

- Aluminum alloy extrusion
- Wood veneer consistency
- Easy to install

## I-Ceiling® WT5040

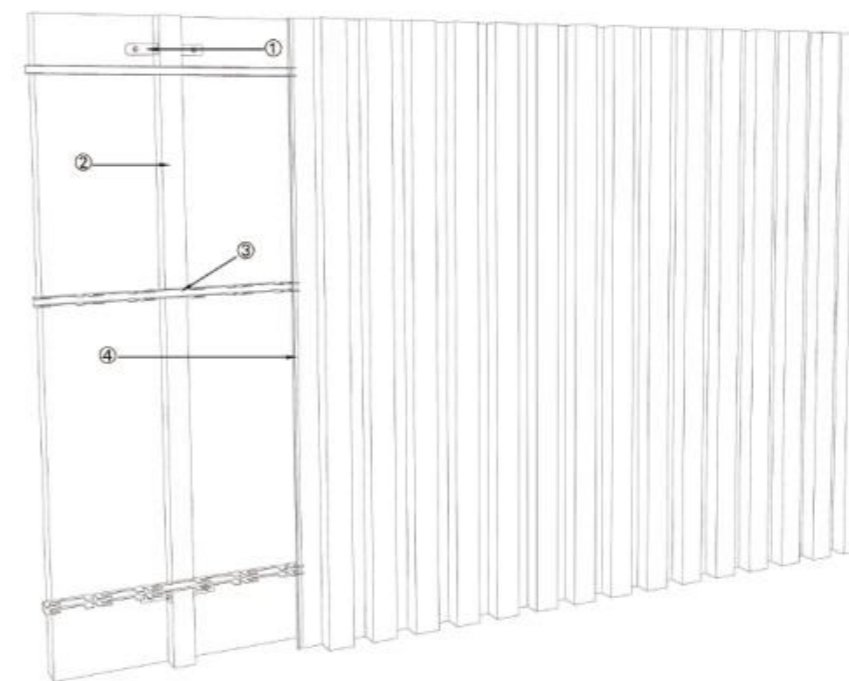
( concave-convex type wall system )

## Product for interior

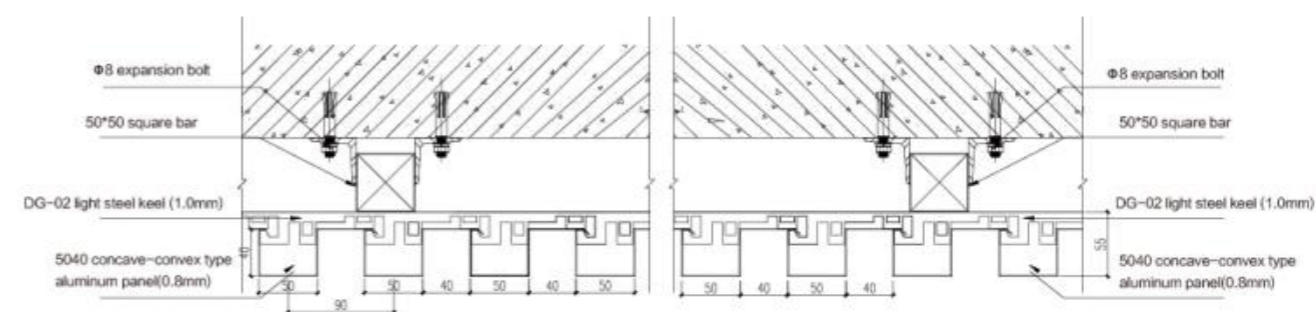


**I-Ceiling**  
WT5040 belongs to closed indoor wall system, it can be installed vertically and horizontally, firm and with strong sense of line, a variety of wooden texture surface creates warm feeling, suitable for most of the public areas. Dedicated carrier ensures the flatness. The surface can be perforated with acoustic material backing, have good sound-absorbing function.



○I-Ceiling® WT5040 ( concave-convex type wall system )  
model diagram and detailed decomposition map



- ① bracket ( 40\*40mm )
- ② square bar ( 40\*40mm )
- ③ DG-02 light steel keel ( 1.0mm )
- ④ 5040 concave-convex type aluminum panel ( 0.8mm )



System component

I-Ceiling® WT5040	main material				Carrier			
	Shape	Materials	Specification (W*H*L)mm	Thickness (mm)	Shape	Materials	Specification (mm)	Thickness (mm)
	concave-convex type strip	AA grade aluminum alloy	(50+40)*40* (1000-6000)	0.8	DG02 type special steel keel	Galvanized steel	28*28	1.0
Structure Diagram								

Description



Texture and color: please refer to Pivot color chart



Distance modulus: 90mm or adjust as needed



Perforation: various perforation pattern available, Sound-absorbing paper back-  
ing, NRC=0.7



Processing: 1. compression moulding 2. Roll-forming

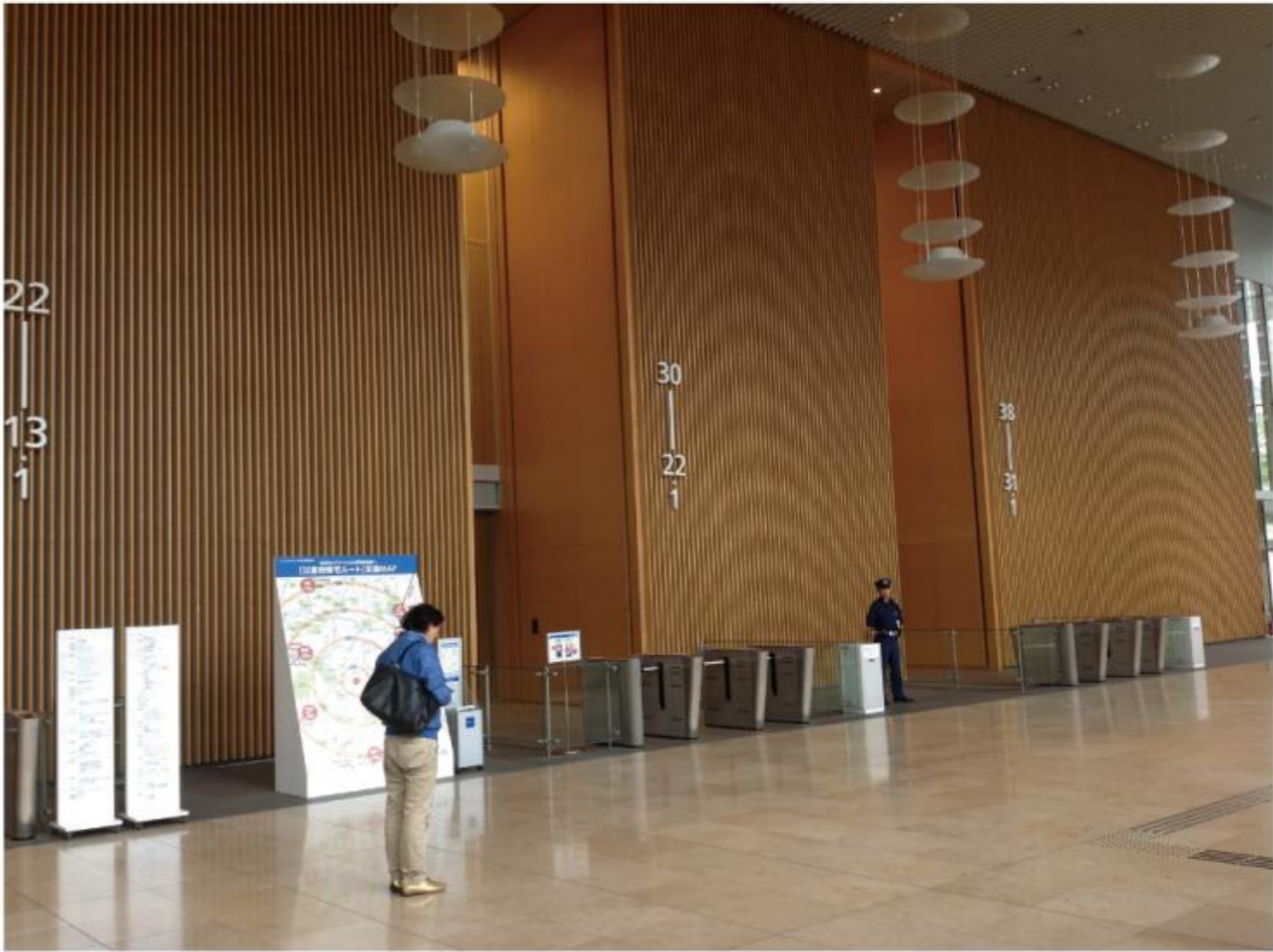


Surface treatment: hot-pressing lamination ( film thickness ≈ 0.2mm )



Special size requirement could be customized

Application and Advantages



I-Ceiling® WT5040  
( concave-convex type wall system ) Advantage

- Wood veneer Consistency
- Easy to install
- Dedicated steel carrier
- variety choice of distance modulus

## I-Ceiling® SunT5040

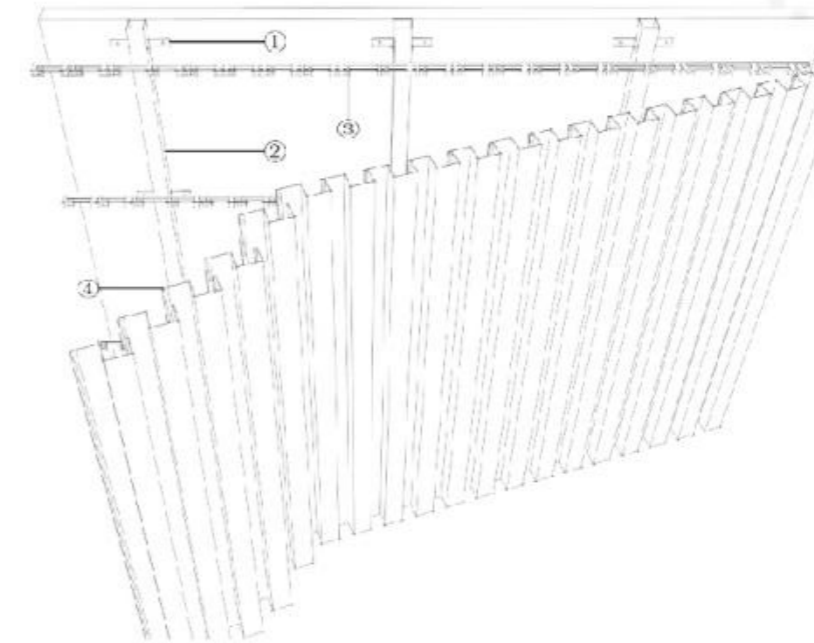
( Sun concave-convex type wall system )

Product for exterior

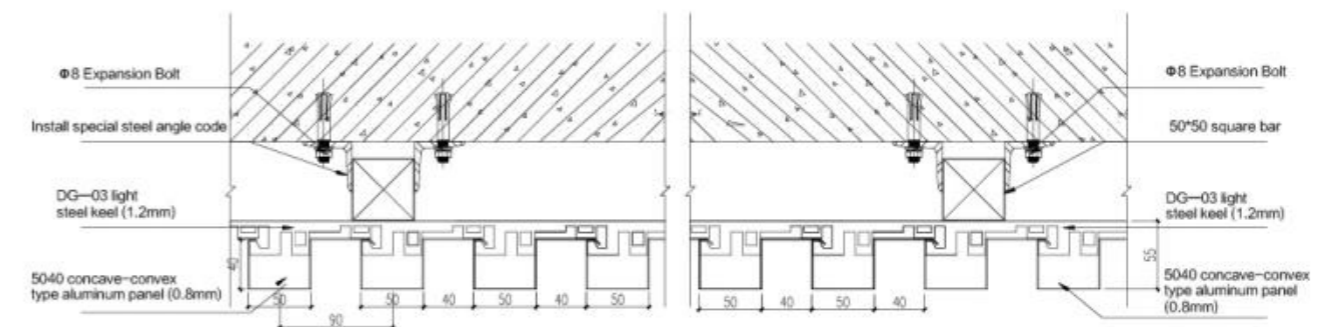


I-Ceiling® SunT5040 belongs to closed outdoor wall system, it can be installed vertically and horizontally, firm and of strong sense of line, a variety of wooden texture surface creates warm feeling, suitable for most of the public areas. Dedicated reinforced carrier ensures the flatness and safety of wind-pressure.



○I-Ceiling® SunT5040 ( Sun concave-convex type wall system )  
model diagram and detailed decomposition map



- ① Bracket ( 40\*40mm )
- ② Square bar ( 40\*40mm )
- ③ DG-03 light steel keel ( 1.2mm )
- ④ 5040 concave-convex type panel ( 0.8mm )



System component

I-Ceiling® SunT5040	main material				carrier			
	shape	materials	specification (W*H*L)mm	thickness (mm)	shape	materials	specification (mm)	thickness (mm)
	concave-convex type strip	AA grade aluminum alloy	(50+40)*40* (1000-6000)	0.8	DG03 type special steel keel	galvanized steel	28*28	1.2
Structure Diagram								

Description



Texture and color: please refer to Pivot color chart



Distance modulus: 90mm or adjust as needed



Perforation: various perforation pattern available



Processing: 1. compression moulding 2. Roll-forming



Surface treatment: hot-pressing lamination ( film thickness ≈ 0.2mm )



Special size requirement could be customized

Application and Advantages

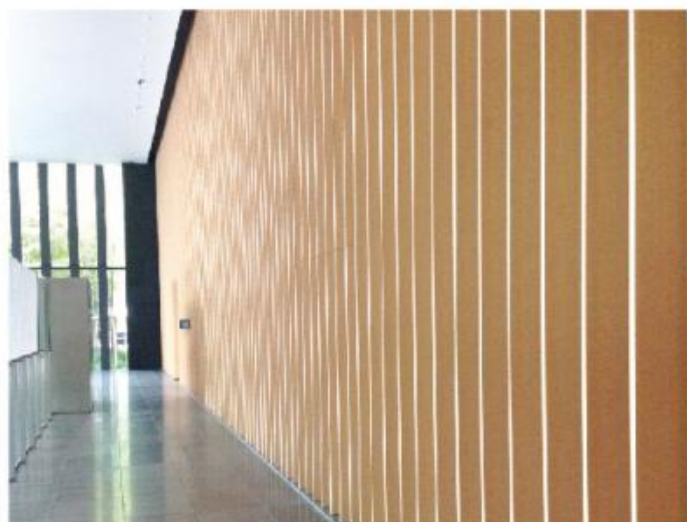
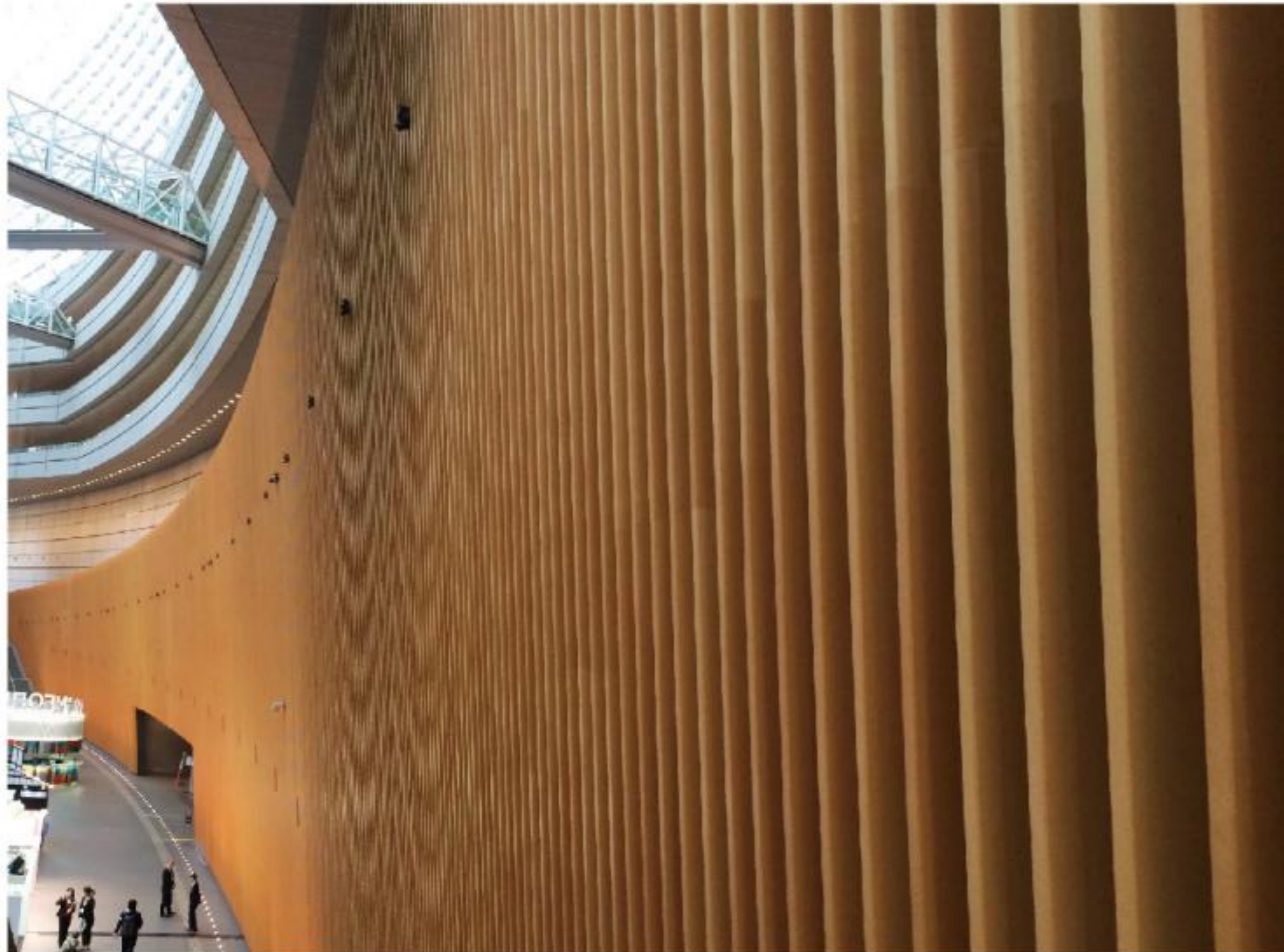


I-Ceiling® SunT5040  
( Sun concave-convex type wall system ) Advantage

- light weight system
- easy to install
- wood veneer looks natural and clear
- With specially designed wind-proof structure
- back side closed system

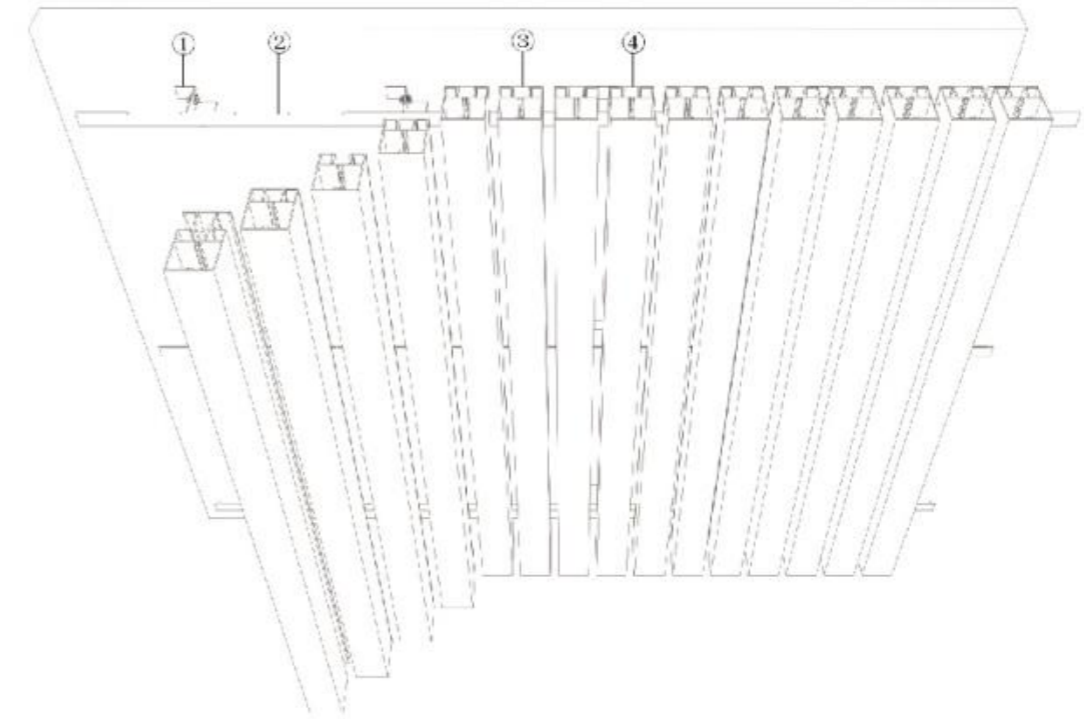
## I-Ceiling® SunU5040 ( Sun See-through wall system )

### Product for exterior

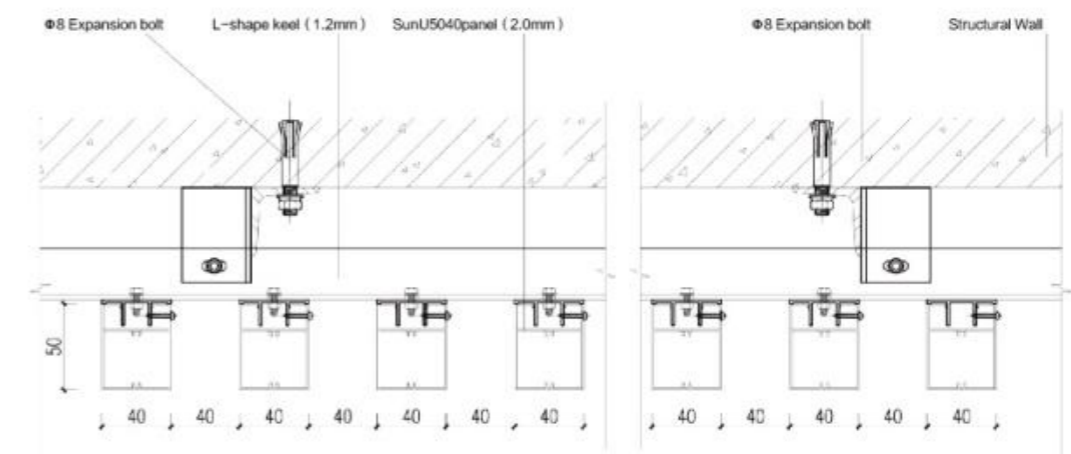


I-Ceiling® SunU504 belongs to see-through outdoor wall system, it can be installed vertically and horizontally, firm and of strong sense of line, a variety of wooden texture surface creates warm feeling, suitable for most of the public areas. With specially designed wind-proof structure, the reinforced carrier is of high security.



### ◎ I-Ceiling® SunU5040 ( Sun See-through wall system ) model diagram and detailed decomposition map



- ① Square bar ( 40\*40mm )
- ② L-Shape keel ( 1.2mm )
- ③ Fastener
- ④ SunU5040 panel ( 2.0mm )



○ System component

I-Ceiling® SunU5040	main material				Fastener			
	Shape	Materials	Specification (W*H*L)mm	Thickness (mm)	Shape	Materials	Specification (mm)	Thickness (mm)
	U-shape profile	AA grade aluminum alloy	40*50* (1000-6000)	2.0	Clip profile	aluminium extruded sections	40*15	2.0
Structure Diagram								

○ Description



Texture and color: Please refer to Pivot color chart



Distance modulus: 80mm or adjust as needed



Perforation: no



Processing: hot extrusion



Surface treatment: hot-pressing lamination ( film thickness ≈ 0.2mm )



Special size requirement could be customized

○ Application and Advantages



I-Ceiling® SunU5040  
( Sun See-through wall system ) Advantage

- Light weight system
- Easy to install
- Wood veneer looks natural and clear
- With specially designed wind-proof structure
- Back side closed system

# I-Ceiling® Product Features & Certificate

Testitem	Testing Method	Test Result		International Test Value	Testing Standard
Dimensional Stability	15 minutes under 100 degrees centigrade water	Length Direction	-7.0~0		GB/T22412-2008
		Width Direction	-2.0~2.0		
Tensile Strength	JIS K6732	Length Direction	More Than 24.5		
		Width Direction	More Than 19.6		
Elongation At Break	JIS K6732	Length Direction	More Than 100		
		Width Direction	More Than 50		
Weather Resistance	JIS B7753 (solarization,carbonarc)	Indoor	2000 Hours Of Accelerated Agein $\Delta E \leq 2.0$	$\Delta E \leq 2.0$	Artificial Ageing Standard GB/T 16259-2008
		Outdoor	6000 Hours Of Accelerated Agein $\Delta E \leq 4.0$	$\Delta E \leq 4.0$	
Chemical Resistance	Place chemicals on the panel surface and remove the chemicals six hours later,exam the surface	1% Sodium Carbomate		Without Change	24 Hours Of 2% Calcium Hydroxide
		5% Ethylic Acid	Without Obvious Change	Without Change	24 Hours Of 2% Hydrochloric Acid
		1% Hydrochloric Acid		Without Change	24 Hours Of 2% Engine Oil
		Petroleum Ether		5%	Concussion Of Standard Sand
Anti-fouling Effect	Place chemicals on the panel surface and remove the chemicals six hours later,exam the surface	Coffee			
		Soy Sauce	Without Obvious Change		
		Worcester Sauce			
Washing Fastness	Place chemicals on the panel surface and remove the chemicals six hours later,exam the surface	Alkaline Detergent			
		Neutral Detergent	Without Obvious Change		
		Petroleum Ether		Butanone	100 Times Wiping
Solvent Resistance	Rubbing for more than 10 times	Alcohol	Without Obvious Change		
		Paint Thinner			
Frictional Resistance	JAS crocking test C	More Than 200			
Scratch Resistance	Rubbing for more than 20 times withvet	Without Obvious Change			
Surface Hardness				3H	Hardness Testing Of Chung Hwa

JIS: Japanese Industrial standard    JAS: Japanese Agricultural standard

## Test Report



flameproof test : attain the national A-level standards



Test of weather resistance: artificial accelerated aging 6000 hour



environmentally-friendly test: no formaldehyde volatilization



antimicrobial test : with a good inhibitory effect on escherichia coli, staphylococcus aureus

## Patent



Certificate of New high technology product

Decobond®, I-Ceiling® are the important new high technology products of Jiangsu province, they owned 8 patents.

- |                     |                     |
|---------------------|---------------------|
| ZL 2010 2 0220203.9 | ZL 2011 2 0531836.6 |
| ZL 2011 1 0425855.5 | ZL 2011 2 0531851.0 |
| ZL 2011 2 0531820.5 | ZL 2011 2 0531839.X |
| ZL 2011 2 0531837.0 | ZL 2011 2 0531719.2 |

# Maintenance

## I. Transportation and storage

The carriage must be clean and dry. Loading height, width and length must be in accordance with the regulations, preservation is scientific and reasonable; long member products transports with super long frame configuration. Loading and unloading is soft and tying up to prevent the transport , loading and unloading scattered and damage.

## store

1 The materials should be put in storage once marching into the arena and be underlay, leveled and tidy to prevent deformation.

2 The protective film must be closed well, then be installed. Before the indoor and outdoor wet work is completed, the plastic film can not be damaged, to prevent the erosion of the surface layer of mortar etc.. Such as accidentally dirtting onto metal decorative panel, should promptly wipe.

3 The protective film should be teared apart in hand before the project is completed, with gently tearing and forbid using knife, to prevent it from being scratched and keep beautiful.

4 Iceiling® need special attention of the protection of the surface of the material, cannot be scratched with hard objects and soaked in water, surface cannot be tainted with contamination of acid and alkali.

## II. Construction environment

1 In the construction process of metal plate, strengthen the protection work of other units have finished should be strengthen, such as clear water concrete column wall, glass curtain wall, the wind pipe, hydropower pipe etc.. Firstly, the edge of the hole of the scaffold with protective railings and security network maintenance, to prevent falling objects; the construction process to play electric hammer and hang steel bar, people cannot stabd on the wind pipe, wire slot, to prevent damaging the protective layer. Glass curtain wall of construction site (especially welding) should be covered with colorful cloth, joinery board protects curtain wall below the other units, to ensure the finished product is not damaged.

2 The material operator must prepare materials according to the task of construction materials, and make procedures, and check the quality of materials, forbid the materials of damaged or cauterant decorative surface being used in the work.

3 In the handling of the hoisting process, protective measures are necessary to take, isolation protection for the material with wooden plate or wooden frame, to prevent damage.

## III. Cleanness and maintenance

1. Do not use strong organize solvent, such as MEK, MIEK, trichloro ethylene, paint thinner and the like as well as stronger alkali, acid and corrosive detergent. It is better to adopt neutral detergent; finally, the plate surface is cleaned by great number of water; and detergent is not left.

2. Do not mix the different detergents; usually, the detergent comprising grinding material cannot be used; do not mix the detergents and scrub excessively, because it will change the luster of the surface.

3. When cleaning the product, the temperate is not high or low; the high temperature will quicken the reaction of the chemical materials and evaporate the water from the water solution; and the low temperature will get poor cleaning effect. Conversely, the high temperature will result in stripe or deformation of the plate surface. The sponge or cloth for cleaning does not comprises flax in case of scraping the coating surface.

4. For the product quality problem during the guarantee period, the company will adopt reservation, change, return of goods, refund and the like according to the actual condition of the sheet; and our company takes no responsibility for any product quality caused by the violated using specification.

# Material Realization

Project Name: Japan International Hotel

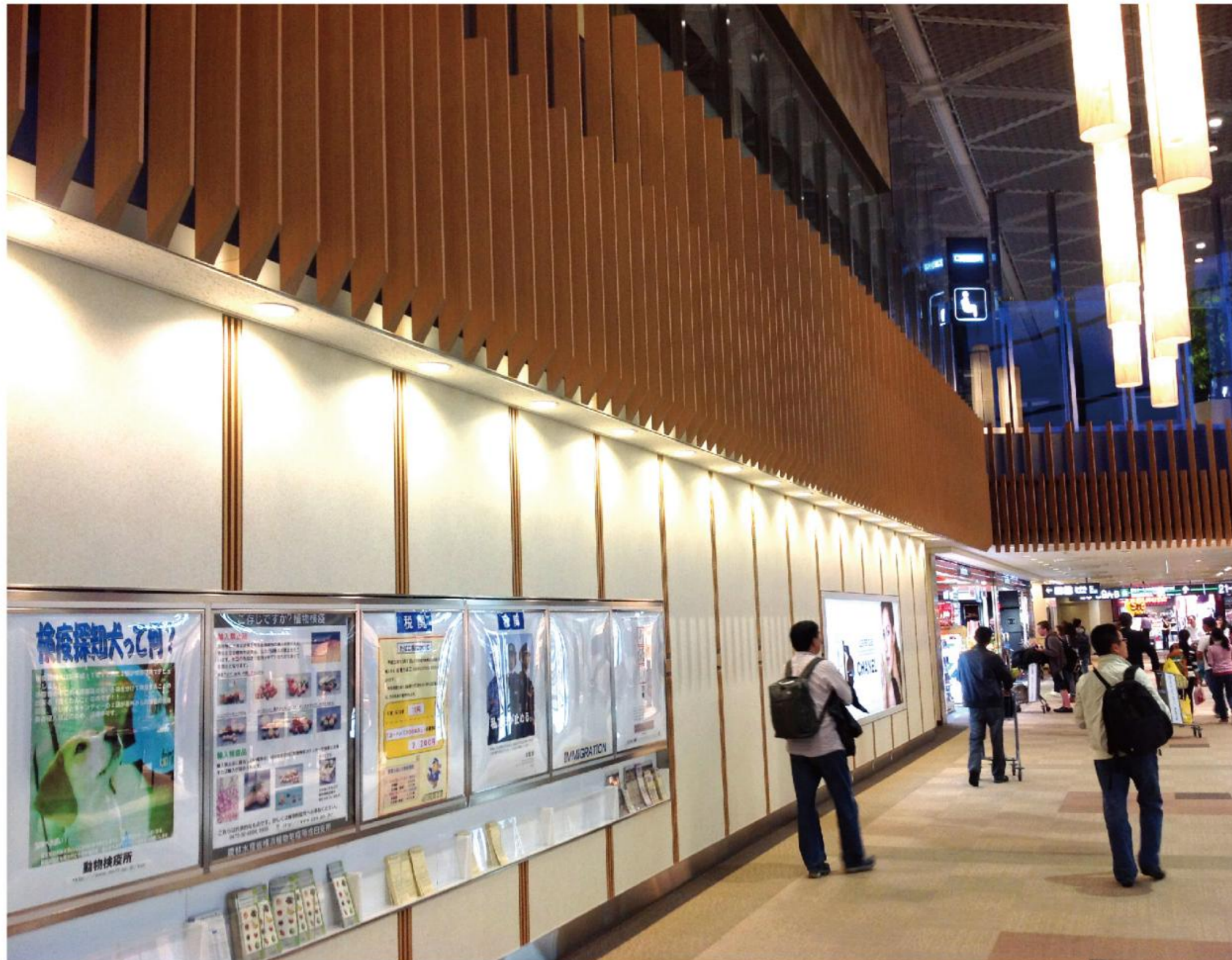


## Material Realization



Project Name: Japan International Hotel  
 Applications: Wooden texture metal composite panel ( Decobond® )  
 Wooden texture metal panel ( I-Ceiling® CU30100、I-Ceiling® WF5035 )  
 Material Realization: Inspiration、Ideation、Implementation

## Material Realization



Project Name: Narita International Airport  
 Wood finishes metal plate (I-Ceiling®)  
 Material Realization: Inspiration, Ideation, Implementation

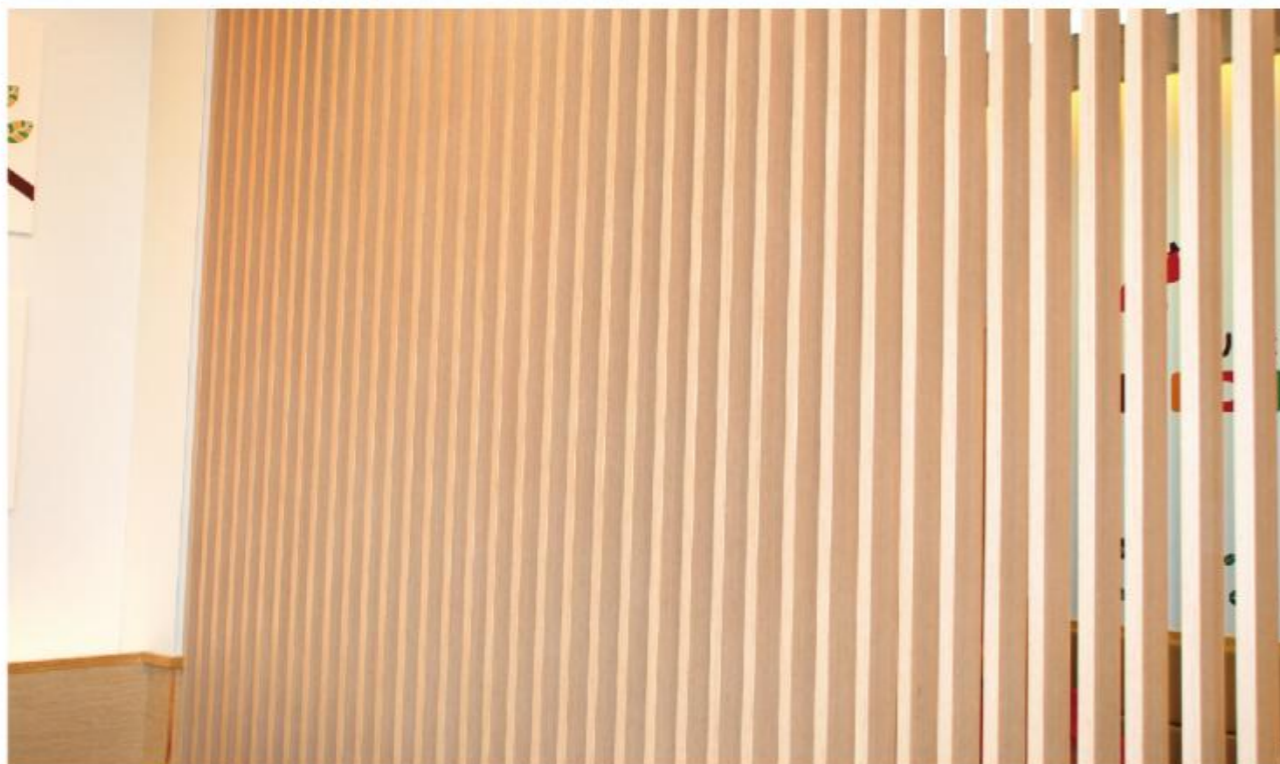
# Material Realization

Project Name: Dicos

Applications: Wooden texture metal composite panel (Decobond®)

Wooden texture metal panel (I-Ceiling®)

Material Realization: Inspiration、Ideation、Implementation



Project Name: Dicos

## Material Realization



Project Name: Shanghai Zhongshan Hospital  
 Applications: Wooden texture metal composite panel ( Decobond® )  
 Wooden texture metal panel ( I-Ceiling® CU30100 )  
 Material Realization: Inspiration, Ideation, Implementation



Project Name: Shanghai Zhongshan Hospital  
 Applications: Wooden texture metal composite panel ( Decobond® )  
 Wooden texture metal panel ( I-Ceiling® CU30100 )  
 Material Realization: Inspiration, Ideation, Implementation

## Material Realization



Project Name: Nanjing Wondercity  
 Applications: Wooden texture metal composite panel ( Decobond\* )  
 Wooden texture metal panel ( I-Ceiling\* )  
 Material Realization: Inspiration、Ideation、Implementation

## Material Realization

Project Name: McDonald's

Applications: Wooden texture metal composite panel ( Decobond® )

Wooden texture metal panel ( I-Ceiling® WF5035 )

Material Realization: Inspiration、Implementation



Project Name: Qujiang Exhibition Center

Applications: Wooden texture metal composite panel ( Decobond® )

Wooden texture metal panel ( I-Ceiling® WF5040 )

Material Realization: Inspiration、Ideation、Implementation



# I-Ceiling® Advantage & Popular Colors

## ○ I-Ceiling® Advantage



**Fire-resistance**  
Wood texture metal composite panel has good fire resistance, up to A level.



**Weatherability and moisture-proof**  
Strong weatherability, acid alkaline resistant, moisture proof, color durable for more than 15 years.



**Easy to install**  
Good workability, easy to groove, fold and curve. With convenient system, installation is easy and fast. Saving 50% hours than the traditional wall installation



**Environment friendly**  
China National Environment Preservation Certified, no formaldehyde volatilization, no glue installation. The results of test reach the E0 level international highest healthy standards.



**Scratch resistance**  
The surface contains hardness ingredients, which makes it free of scrape, more than 30% superior to painted surface.



**Antibacterial**  
Antibacterial series, panel with antibacterial function, maintain the cleanliness of the panel. Products are widely used in medical and food and beverage industry.

## ○ Popular I-Ceiling® Colors



BA-3031



BF-1005



BF-1006



BF-1008



BF-1009



BH-1004



BH-3007



BH-3129



BH-3179



BH-4002



BR-4043



BS-1020



BX-1015



BX-2017



BX-3018



BX-3182



BY-1001



BY-3001



BZ-4035



TE-3013

## Innovation Achieve PIVOT

In these ever-changing times, PIVOT sticks to the innovation path and provides its customers with unique innovative solutions from product research and development and application depending on its boundless innovation capacity and rich industry experience. It assists local and global enterprises to achieve the balance between decoration and functions and is committed to achieve harmonious interaction of materials, lives and environment.

## Products Innovation

It is the development trend of China Construction Industry that more and more attention is paid to quality standards and sustainable development. The emphasis of design is laid on durability and performance. As the leader of China decorative materials industry, PIVOT is superior in "aesthetic appearance, energy conservation and environmental protection".

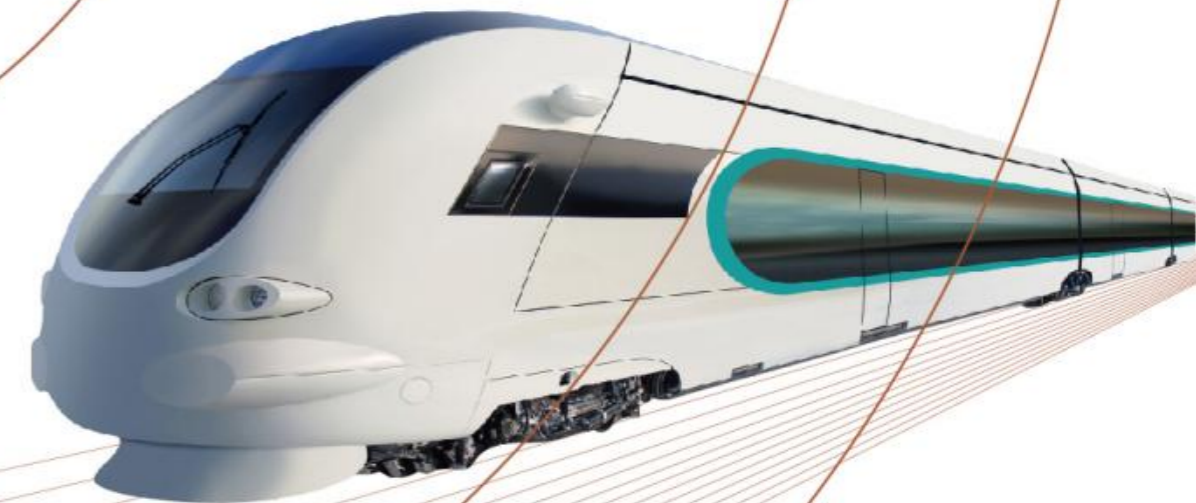
PIVOT has created many innovative products like wear-resistant and anti-scratch aluminum panel used first in CRH trains, wooden texture products used sophisticatedly in commercial space, original dual-color aluminum composite panel patented for invention, fire-proof and damp-proof aluminum composite panel and nano self-cleaning composite panel. These products are the mainstream in building materials industry. With them, PIVOT keeps its leadership in the trade.



## There is always a material language under each design idea

Materials are the physical units of buildings. Buildings are the physical space for human living. Materials affect the appearance and quality, create various indoor spaces and are the shield to isolate nature and the medium to link human with nature.

Proper application of materials makes building space more "Lively". Firstly, it means lively building functions, namely new materials making buildings a balanced ecological system with warm in winter and cool in summer and autonomic adjustment; secondly, it means lively building form, namely building materials exceeding traditional meaning like environment-friendly plant fiber walls, paper buildings and new glass discoloring with light and the buildings becoming more plastic, aesthetic and higher quality to make designers realize unique building languages; thirdly, it means lively emotion, namely buildings being sentient. The ultimate purposes of material innovation and design are to deepen the communication between human and space.



Innovation is a kind of spirit,  
lying in every person, every thing.

# BETTER MATERIALS BRIGHTER FUTURE THINK ABOUT FUTURE

---

Human beings surpass themselves due to innovation and progress due to surpassing. When "innovation" becomes a kind of faith, dream will come true. PIVOT will maintain the past glory and continue to innovate like a beginner. PIVOT will also actively face to fierce competition in the future, realize the diversification of materials and create a long-lasting strong brand.

PIVOT has realized innovative transformation and transformed from resources consumption to resources conservation – from single metal to composite materials; from resource materials like solid wood, stone materials to environment-friendly composite texture materials; from on-site decoration and processing to modularized installation of saving decoration materials.

INTERPRETION  
OF INNOVATION